



eTEACHER
Empowering Energy Education

MISSION

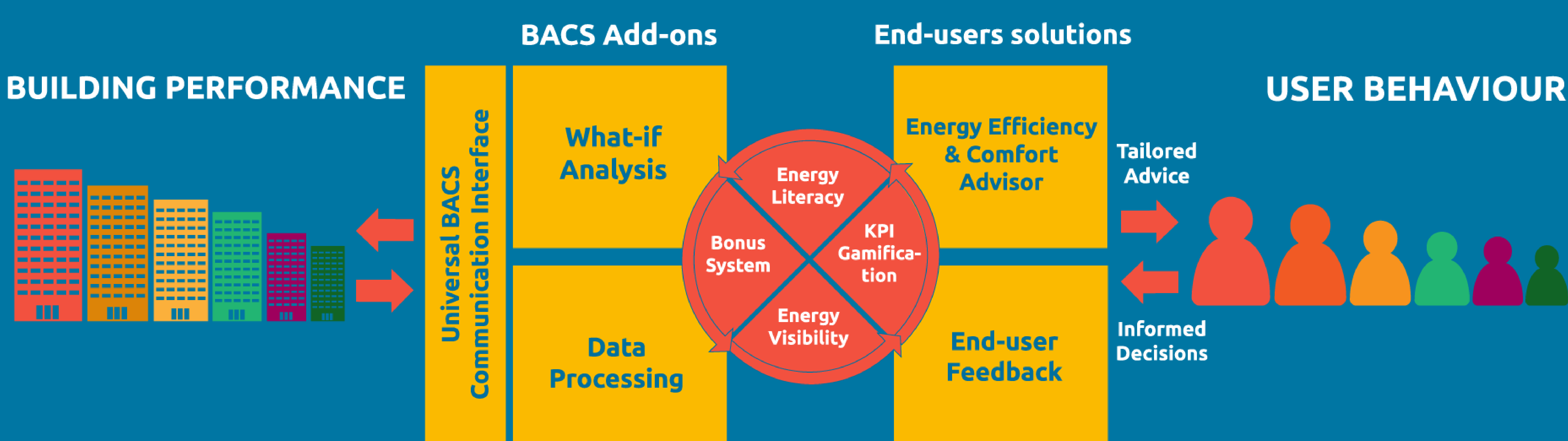
Encourage and enable energy behaviour change of building users to save energy and optimise indoor environmental quality.

VISION

Carry out behaviour change interventions facilitated through a set of empower tools to drive informed user decisions.

CONCEPT

EMPOWER TOOLS BEHAVIOURAL CHANGE INTERVENTIONS



eTEACHER empower tools are a set of ICT solutions classified into:

BACS ADD-ONS

- Collect information from the building
- Pre-process data to focus on relevant metrics
- Explore potential energy conservation measures
- Post-process data to have high impact on users behavior

END-USERS APPLICATIONS

- Provide tailored advice according to energy conservation measures
- Collect end-users feedback on indoor environmental quality
- Integrate ICT-based behavioural change techniques

eTEACHER IS DEMONSTRATED IN...



SPAIN
2 HEALTHCARE CENTRES
2 SCHOOLS
1 RESIDENTIAL BUILDING
1 OFFICE



UNITED KINGDOM
1 SCHOOL
1 OFFICE



ROMANIA
4 RESIDENTIAL BUILDINGS

12

PILOTS

3

EUROPEAN COUNTRIES

5,000

PEOPLE INVOLVED

4

BUILDING TYPOLOGIES



FOLLOW US



www.eteacher-project.eu



@Eteacher_Eu

CONTACT US

coordinator@eteacher-project.eu

communication@eteacher-project.eu

COORDINATOR



PARTNERS



This project has received funding from the European Union's Horizon 2020 research and innovation programme under grant agreement No 768738

